

SPECIAL FEATURES



WITH DOUBLE FLUSHING PORTS.
SUITABLE WITH FLANGED, PANCAKE OR INLINE DIAPHRAGM SEALS.
AVAILABLE IN ALL EXOTIC MATERIAL GRADES.

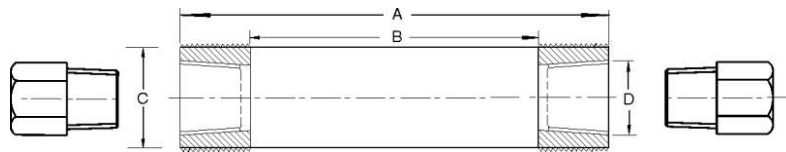
APPLICATIONS

THE FLUSHING RING IS DESIGNED TO BE SANDWICHED BETWEEN THE PROCESS FLANGE & THE DIAPHRAGM SEAL. MATERIAL COLLECTED IN FRONT OF DIAPHRAGM CAN BE FLUSHED OUT THROUGH THE FLUSHING PORTS.

STANDARD VERSION

(COMPATIBLE MODELS : 04-01, 04-02, 04-09, 04-10, 04-11 & 04-13)

Flange size	2" to 5" as per ANSI B 16.5
Material	AISI 316 SS
Number of ports	Two
Port connection	1/4" NPT (F) with male plug
Sealing face	Raised face



FOR COUPLED TYPE DIAPHRAGM SEALS

MODEL	A	B	C	D
DA	63	40	30	1/4" OR 1/2"NPT (F)
DB	98	70	30	

FOR FLANGE TYPE DIAPHRAGM SEALS

FLANGE SIZE	CLASS	A	B	C	D
2"	150 # TO 2500 #	92	62	30	1/4" OR 1/2"NPT (F)
3"	150 # TO 2500 #	127	92	30	
4"	150 # TO 2500 #	157	92	30	
5"	150 # TO 2500 #	185.5	126	30	

HOW TO ORDER

BASIC MODEL CODE

OPTIONAL EXTRAS

FLUSHING RING MATERIAL

KM AISI 316L SS	KV CARBON STEEL	KX TITANIUM
KY HASTELLOY C	KW MONEL	CT AISI 316 SS (Standard)

FLUSHING PORTS (WITH TWO MALE PLUGS)

VF 1/4" NPT (F) (Standard)	VD 1/2"NPT (F)
-----------------------------------	-----------------------

SEALING FACE

A2 RAISED FACE	A3 FLAT FACE
-----------------------	---------------------

NOTE: OTHER SEALING FACE CAN BE PROVIDED ON REQUEST. PLEASE SPECIFY IN ORDER.

OPTIONS

GH MATERIAL TEST CERTIFICATES*

* MATERIAL TEST CERTIFICATES WILL BE PROVIDED FOR WETTED PARTS ONLY WITH CHEMICAL COMPOSITION TESTING. FOR OTHERS, PLEASE CONSULT FACTORY.

Ordering Example: AC-04 - XX - XX - XX - XX

Example
AC-04

XX

XX

XX

XX