

## SPECIAL FEATURES

Stainless Steel Case & Measuring System  
 Static Pressure Up to 6000 psi  
 Dry Or Liquid Filled  
 Standard Followed AMSE -B.40.1 / EN837-3  
 IP:65

## SPECIFICATIONS

Ambient Temperature: -4°F(-20°C)to+150°F(+65°C)  
 Process Temperature: Max.212°F (+100°C)  
 Operating Pressure Range: 75% of Scale Value  
 Over Pressure Limit: 125% of Max. Scale Value  
 Case: AISI 304 SS  
 Joints: Tig Argon Arc Welding  
 Socket: AISI 316L SS  
 Diaphragm: AISI 316L SS  
 Movement: AISI 304 SS  
 Dial: Aluminum  
 Pointer: Micro Zero Adjustable  
 Window: Safety Glass  
 Range: 15"WC-160PSI

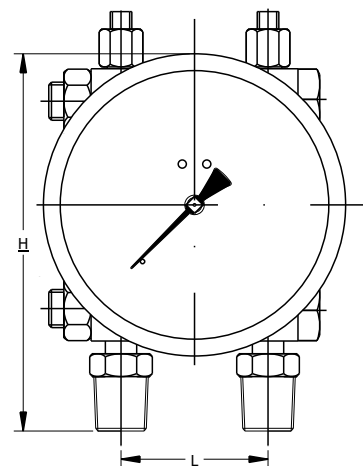
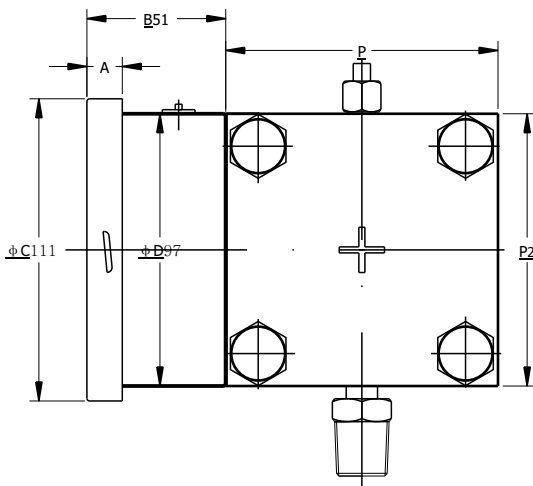


## ACCURACY AS PER ASME B.40.1

4"/6" : 3-1-3 (GRADE B)

4"/6" : 2-1-2 (GRADE A)

\*Please consult factory for better accuracy availability.



NS	A	B	φ C	φ D	P	P2	P2	L	Weight (lbs)
4"	0.5"	2"	4.4"	3.8"	4"	4"	5.6"	2"	6.6
6"	0.6"	2.2"	5.9"	5.8"	4"	4"	6.2"	2"	17.6

## HOW TO ORDER

### NOMINAL SIZE

F H  
4" 6"

Example

X

### TYPE OF MOUNTING

- 1 WALL/SURFACE/PROJECTION MOUNTING WITH BOTTOM
- 2 BOTTOM
- 9 2" PIPE/YOKE MOUNTING WITH BOTTOM ENTRY

X

### GAUGE CONNECTION

- 3BM** 3/8" BSP(M)
- 3NM** 3/8" NPT(M)
- 4BM** 1/2" BSP(M)
- 4NM** 1/2" NPT(M)
- 4MM** M20 X 1.5(M)

\*\*\*Please consult factory for any special connections

XXX

### SEAL CHAMBER (\*Consult Factory for Specification, Price and Delivery)

- |                                  |                        |                          |
|----------------------------------|------------------------|--------------------------|
| <b>TK</b> AISI 304SS             | <b>TX</b> MONEL        | <b>TZ</b> PVC*           |
| <b>TM</b> AISI 316L SS           | <b>TT</b> HASTELLOY C' | <b>UA</b> PVDF*          |
| <b>TL</b> AISI 316L SS(Standard) | <b>UD</b> TANTALUM     | <b>TY</b> POLYPROPELENE* |
| <b>UH</b> TITANIUM               |                        |                          |

X

### DIAPHRAGM

- |                                  |                    |                       |
|----------------------------------|--------------------|-----------------------|
| <b>UJ</b> AISI 316L SS(Standard) | <b>UR</b> TITANIUM | <b>UL</b> HASTELLOY'C |
| <b>UM</b> MONEL                  | <b>UQ</b> TANTALUM |                       |

X

### FILLING FLUIDS (\*Consult Factory for Specification, Price and Delivery)

- |  |                                       |
|--|---------------------------------------|
| <b>US</b> FLUROLUBE 4.2[-45 to 175°C]            | <b>UY</b> SILICON DC 704(10 to 337°C) |
| <b>UT</b> FLUROLUBE 6.3[-40 to 235°C]            | <b>UZ</b> SILICON DC 710(7 to 371°C)  |
| <b>UU</b> FLUROLUBE FS-5[-28 to 148°C]           | <b>VA</b> SYLTHERM 800(-40 to 315°C)  |
| <b>UV</b> FOOD GRADE OIL[-20 to 140°C]           | <b>VB</b> SYLTHERM XLT(-100 to 260°C) |
| <b>UX</b> SILICON DC 200[-40 to 205°C](Standard) | <b>VC</b> HALOCARBON OIL*             |

X

### RANGE

CODE	LPE7	LPE8	LPE9	LPE10	LPE11	LPE12
RANGE ( "WC )	15"WC	30"WC	35"WC	60"WC	100"WC	160"WC
CODE	LPE13	LPE14	LPE15	LPE16	LPE17	LPE18
RANGE ( psi )	10psi	15psi	30psi	60psi	100psi	160psi

LPE9

### OPTIONAL EXTRAS

- |   |  |
|---|--|
| <b>TI</b> MONEL DIAPHRAGM & CHAMBER (MONEL VERSION)                 | <b>CK</b> EPOXY PAINTED CASE & BEZEL   |
| <b>TF</b> TESTED TO NACE STANDARD                                   | <b>OS</b> CASE WITH BAYONET TYPE BEZEL   |
| <b>TB</b> HELIUM LEAK TEST  | <b>PS</b> AISI 316 SS CASE & BEZEL   |
| <b>SD</b> AISI 316 SS MOVEMENT                                      | <b>KA</b> ON-OFF TYPE VENT PLUG  |
| <b>SI</b> KNIFE EDGE POINTER  | <b>SX</b> SS TAG PLATE   |
| <b>FN</b> 2" PIPE/YOKE MOUNTING BRACKET & 'U' CLAMP (AISI 316 SS)   | <b>SY</b> AISI 316 SS TAG PLATE  |
| <b>RG</b> ANTI PARALLAX MIRROR BAND DIAL                            | <b>FS</b> FILLABLE LIQUID SILICON OIL  |
| <b>RH</b> CUSTOM DESIGNED DIAL                                      | <b>FG</b> FILLABLE LIQUID GLYCERINE  |
| <b>SW</b> DIAL TAG MARKING  | <b>ZZ</b> DIELECTRIC OIL FILLED  |
| <b>RW</b> PLEXI GLASS   | <b>PX</b> DAMPENING LIQUID FLOUROLUBE FILLED                                   |
| <b>RX</b> SHATTERPROOF /SAFETY GLASS                                | <b>PY</b> DAMPENING LIQUID GLYCERINE OIL FILLED                                |
| <b>RZ</b> TOUGHENED GLASS   | <b>PZ</b> DAMPENING LIQUID MINERAL LIQUID FILLED                               |
| <b>SJ</b> MAXIMUM READING POINTER WITH PLEXI GLASS FILLABLE VERSION | <b>QA</b> DAMPENING LIQUID SILICON OIL FILLED                                  |
| <b>ZM</b> ELECTRO POLISHED CASE & BEZEL                             | <b>GH</b> MATERIAL TEST CERTIFICATES   |
|   | <b>PW</b> FIVE POINT CALIBRATION CERTIFICATE NATIONAL/ INTERNATIONAL STANDARDS |

XX

Ordering Example: P-14-X-X-XXX-X-X-X-(LPE9)-XX