

SPECIAL FEATURES

- Standard Followed ASME-B 40.1 / EN837-1
- Cost Effective
- Build in Stabilizer Movement
- Dry or Liquid Version
- 40mm Temperature Compensated Blow Out Disc
- IP 65

SPECIFICATIONS

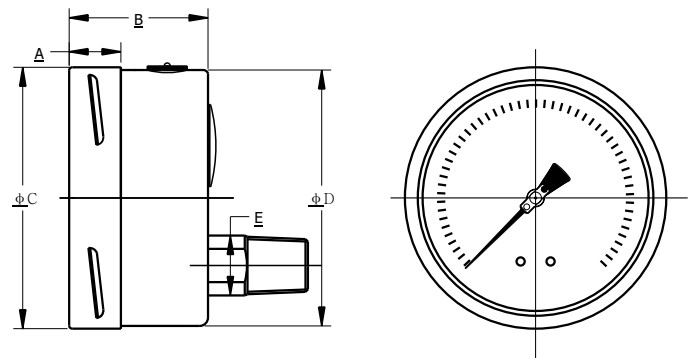
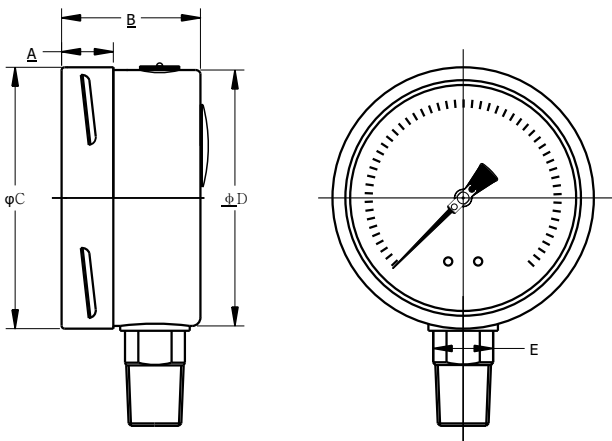
- Ambient Temperature: -4°F (-20°C) to +150°F(+65°C)
- Process Temperature: Max.248°F (120°C)
- Operating Pressure Range: 75% of Scale Value
- Over Pressure Limit: 125% of Max.Scale Value
- Case: AISI 304 SS
- Joints: Alloy brazing/Soldering
- Socket: Copper Alloy
- Bourdon: Copper Alloy
- Movement: Copper Alloy
- Dial: Aluminum
- Pointer: Fixed/Micro Zero Adjustable
- Window: Safety Glass
- Range: Vacuum to 6,000 psi



ACCURACY AS PER ASME B.40.1

- 2.5"/3" : 2-1-2 (GRADE A)
- 4"/6" : 1-1-1 (GRADE 1A)

*Please consult factory for better accuracy availability.



NS	A	B	φC	φD	E	Weight (lbs)
2.5"	0.5"	1.36"	2.5"	2.44"	0.55"	0.40
3"	0.55"	1.56"	3.1"	3"	0.67"	0.60
4"	0.67"	1.93"	3.95"	3.9"	0.87"	0.41
6"	0.68"	1.97"	6.34"	6.2"	0.87"	2.65

NS	A	B	φC	φD	E	Weight (lbs)
2.5"	0.5"	1.3"	2.5"	2.44"	0.55"	0.40
3"	0.55"	1.56"	3.1"	3"	0.55"	0.60
4"	0.67"	1.93"	3.95"	3.9"	0.87"	0.41
6"	0.68"	1.97"	6.34"	6.2"	0.87"	2.65

Example

HOW TO ORDER

NOMINAL SIZE

D	E	F	H
2.5"	3"	4"	6"

X

TYPE OF MOUNTING

- 1 WALL/SURFACE/PROJECTION MOUNTING WITH BOTTOM
- 2 BOTTOM
- 3 LOWER BACK
- 4 CENTER BACK
- 5 LOWER BACK WITH FRONT FLANGE
- 6 LOWER BACK WITH MOUNTING BRACKET
- 7 CENTER BACK WITH FRONT FLANGE
- 8 CENTER BACK WITH MOUNTING BRACKET

X

GAUGE CONNECTION

- 2BM** 1/4" BSP(M)
- 2NM** 1/4" NPT(M)
- 3BM** 3/8" BSP(M)
- 4TM** 1/2" BSPT(M)
- 4BM** 1/2" BSP(M)
- 4NM** 1/2" NPT(M)
- 4MM** M20 X 1.5(M)

***Please consult factory for any special connections

XXX

RANGE

CODE	E1	E2	E3	E4	E5	E6	E7	E8	E9	E10	E11	E12	E13
RANGE (psi)	-30"hg	-30"hg-15	-30"hg-30	-30"hg-60	-30"hg-100	-30"hg-160	-30"hg-200	-30"hg-300	15	30	60	100	160
CODE	E14	E15	E16	E17	E18	E19	E20	E21	E22	E23	E24	E25	E26
RANGE (psi)	200	300	400	500	600	800	1000	1500	2000	3000	4000	5000	6000

E13

OPTIONAL EXTRAS

- | | |
|---|---|
| <ul style="list-style-type: none"> SG OXYGEN SERVICE (FOR DRY VERSION) OA ACCURACY + 0.5% OF F.S. SF MOVEMENT WITH DAMPENING JELLY SI KNIFE EDGE POINTER FN 2" PIPE/YOKE MOUNTING BRACKET & 'U' CLAMP (AISI 316 SS) RG ANTI PARALLAX MIRROR BAND DIAL RH CUSTOM DESIGNED DIAL ZB RECEIVER RANGE AT ATEX (AS PER 2014/34/EU) ZC FREON RANGE (WITH TEMPERATURE SCALE) SW DIAL TAG MARKING RW PLEXI GLASS RX SHATTERPROOF/SAFETY GLASS RZ TOUGHENED GLASS SJ AISI 316SS TAG PLATE SJ MAXIMUM READING POINTER WITH PLEXI GLASS FILLABLE VERSION | <ul style="list-style-type: none"> ZM ELECTRO POLISHED CASE & BEZEL CK EPOXY PAINTED CASE & BEZEL PS AISI 316 SS CASE & BEZEL KA ON-OFF TYPE VENT PLUG SX SS TAG PLATE SA INTERNAL OVERPRESSURE STOP SB INTERNAL VACUUM STOP ZL OVER RANGE PROTECTION FK INTEGRAL DAMPENING SCREW (BRASS) FS FILLABLE LIQUID SILICON OIL FG FILLABLE LIQUID GLYCERINE ZZ DIELECTRIC OIL FILLED PX DAMPENING LIQUID FLOUROLUBE FILLED PY DAMPENING LIQUID GLYCERINE OIL FILLED PZ DAMPENING LIQUID MINERAL LIQUID FILLED QA DAMPENING LIQUID SILICON OIL FILLED GH MATERIAL TEST CERTIFICATES PW FIVE POINT CALIBRATION CERTIFICATE NATIONAL/INTERNATIONAL STANDARDS |
|---|---|

XX

Ordering Example: P-34-X-X-XXX-(E13)-XX