

SPECIAL FEATURES

DESIGNED TO PROTECT PRESSURE INSTRUMENTS FROM SUDDEN PRESSURE CHANGES AND FLUCTUATION.

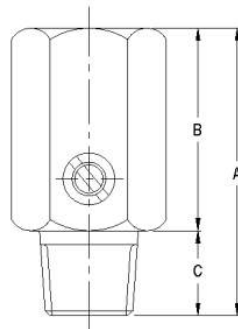
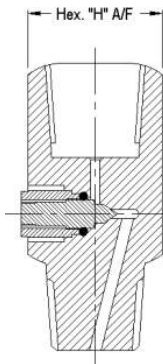
APPLICATIONS

HYDRAULIC MACHINES, COMPRESSORS, PROCESS PLANTS, CLEAN AIR, GASES & NON CRYSTALLIZED LIQUIDS.

SPECIFICATIONS



Working pressure	Up to 400 kg/cm ²
Working temperature	- 20 °C to 120 °C
Instrument connection	1/2" NPT (F)
Process connection	1/2" NPT (M)
Material	AISI 316 SS



Connections	A	B	ØC	Hex. "H" A/F
1/4" (MxF)	63	48	15	17.0
3/8" (MxF)	63	47	16	28.0
1/2" (MxF)	63	43	20	28.0

Notes : • Drawings are not to scale. • All Dimensions are in mm.

HOW TO ORDER

BASIC MODEL

CODE

BODY

CP	BRASS*	CL	AISI 316 SS (Standard)	CM	AISI 316L SS
CQ	AISI 304 SS	CN	MONEL		

* In case of wetted parts of Brass, max. pressure shall be 250 kg/cm²

CONNECTION

2BM.2BF	1/4" BSP (M x F)	3BM.3BF	3/8" BSP (M x F)	4BM.4BF	1/2" BSP (M x F) (Standard)
2NM.2NF	1/4" NPT (M x F)	3NM.3NF	3/8" NPT (M x F)	4NM.4NF	1/2" NPT (M x F) (Standard)
2TM.2TF	1/4" BSPT (M x F)	3TM.3TF	3/8" BSPT (M x F)	4TM.4TF	1/2" BSPT (M x F)
				4MM.4MF	M20 x 1.5 (M x F)

OPTIONAL EXTRAS

SG	OXYGEN SERVICE	GH	MATERIAL TEST CERTIFICATES*	TF	TESTED TO NACE STANDARDS
----	----------------	----	-----------------------------	----	--------------------------

*MATERIAL TEST CERTIFICATES WILL BE PROVIDED FOR WETTED PARTS ONLY WITH CHEMICAL COMPOSITION TESTING. FOR OTHERS, PLEASE CONSULT FACTORY.

Ordering Example: AC-05 - XX - XXX.XXX - XX

FOR OTHER OPTIONAL ITEMS, PLEASE CONTACT FACTORY FOR DELIVERY AND MINIMUM QUANTITY OF ORDER.

Example

XX

XXX.XXX

XX