

SPECIAL FEATURES

Economical Version
 General Purpose Applications
 Standard Followed: ASME-B.40.1/EN837-1

SPECIFICATIONS

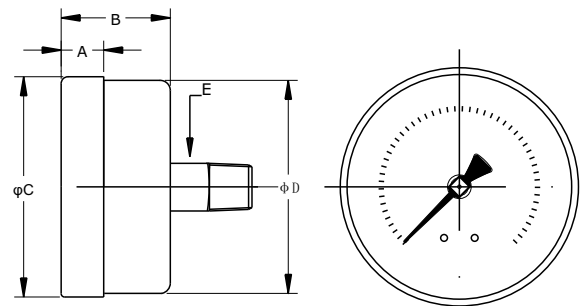
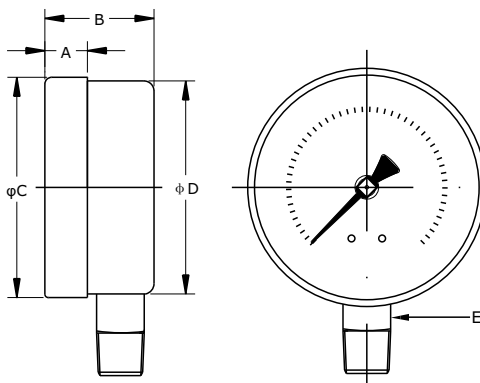
Ambient Temperature: -4°F(-20°C) to+150°F(+65°C)
 Process Temperature: Max. 250°F(120°C)
 Operating Pressure Range: 75% of Scale Value
 Over Pressure Limit: 120% of Max. Scale Value
 Case: Steel, Powder Coated
 Joints: Alloy Brazing/Soldering
 Socket: Copper Alloy
 Bourdon: Copper Alloy
 Movement: Copper Alloy
 Dial: Aluminum
 Pointer: Fixed
 Window: Sheet Glass
 Ranges: Vacuum to 6000psi



ACCURACY AS PER ASME B.40.1

1.5"/2" : 3-2-3 (Grade B)
 2.5"/3"/4" : 2-1-2 (Grade A)

*Please consult factory for better accuracy availability.



NS	A	B	φC	φD	E	Weight (lbs)
1.5"	0.4"	1.0"	1.5"	1.5"	0.4"	0.18
2"	0.4"	1.1"	2.0"	2.0"	0.6"	0.22
2.5"	0.4"	1.1"	2.5"	2.5"	0.6"	0.29
3"	0.5"	1.3"	3.0"	3.0"	0.7"	0.62
4"	0.9"	1.5"	4.0"	4.0"	0.9"	0.82

NS	A	B	φC	φD	E	Weight (lbs)
1.5"	0.4"	1.1"	1.5"	1.5"	0.4"	0.18
2"	0.4"	1.1"	2.0"	2.0"	0.6"	0.22
2.5"	0.4"	1.1"	2.5"	2.5"	0.6"	0.29
3"	0.5"	1.3"	3.0"	3.0"	0.7"	0.62
4"	0.9"	1.5"	4.0"	4.0"	0.9"	0.82

HOW TO ORDER

Example

NOMINAL SIZE

B	C	D	E	F
1.5"	2"	2.5"	3"	4"

X

TYPE OF MOUNTING

- 1 WALL/SURFACE/PROJECTION MOUNTING WITH BOTTOM
- 2 BOTTOM
- 4 CENTER BACK
- 7 CENTER BACK WITH FRONT FLANGE
- 8 CENTER BACK WITH MOUNTING BRACKET

X

GAUGE CONNECTION

- 1BM** 1/8" BSP(M)
- 1NM** 1/8" NPT(M)
- 1TM** 1/8" BSPT(M)
- 2BM** 1/4" BSP(M)
- 2NM** 1/4" NPT(M)
- 2TM** 1/4" BSPT(M)
- 3BM** 3/8" BSP(M)
- 3NM** 3/8" NPT(M)
- 3TM** 3/8" BSPT(M)
- 4BM** 1/2" BSP(M)
- 4NM** 1/2" NPT(M)
- 4TM** 1/2" BSPT(M)
- 4MM** M20 X 1.5(M)

***Please consult factory for any special connections

XXX

RANGE

CODE	E1	E2	E3	E4	E5	E6	E7	E8	E9	E10	E11	E12	E13
RANGE (psi)	-30"hg	-30"hg-15	-30"hg-30	-30"hg-60	-30"hg-100	-30"hg-160	-30"hg-200	-30"hg-300	15	30	60	100	160
CODE	E14	E15	E16	E17	E18	E19	E20	E21	E22	E23	E24	E25	E26
RANGE (psi)	200	300	400	500	600	800	1000	1500	2000	3000	4000	5000	6000

E13

OPTIONAL EXTRAS

- | | |
|--|---|
| SG OXYGEN SERVICE (FOR DRY VERSION) | SJ MAXIMUM READING POINTER WITH PLEXI GLASS (FOR DRY VERSION) |
| SF MOVEMENT WITH DAMPENING JELLY | ZM ELECTRO POLISHED CASE & BEZEL |
| RH CUSTOM DESIGNED DIAL | CK EPOXY PAINTED CASE & BEZEL |
| ZB RECEIVER RANGE | SQ CASE WITH ROLLING TYPE BEZEL |
| ZC FREON RANGE (WITH TEMPERATURE SCALE) | FK INTEGRAL DAMPENING SCREW (BRASS) |
| ZD AMMONIA RANGE (WITH TEMPERATURE SCALE) | GH MATERIAL TEST CERTIFICATES |
| SW DIAL TAG MARKING | PW FIVE POINT CALIBRATION CERTIFICATE NATIONAL/INTERNATIONAL STANDARDS |
| RW PLEXI GLASS | |
| RZ TOUGHENED GLASS | |
| SY AISI 316SS TAG PLATE | |

XX

Ordering Example: P-01-X-X-XXX-(E13)-XX