

**SPECIAL FEATURES**

Curved Type Polycarbonate Lens  
 Maximum Drag Pointer With Key  
 0.39"(10mm) Pointer Arm  
 DIN Case & American Bayonet Case  
 Version For Options



**SPECIFICATIONS**

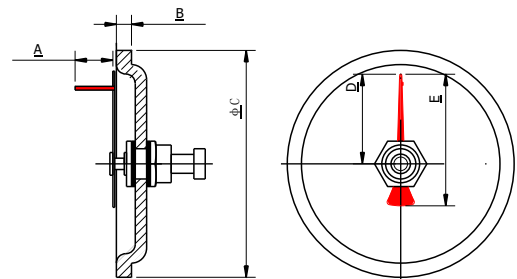
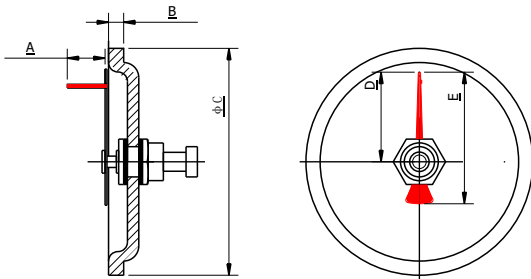
Material: Polycarbonate(PC)  
 Type: Curved Type  
 Pointer: Aluminum Red Painted With Key  
 Pointer Arm: 0.39"(10mm) Customer Can Cut As Request

**STANDARD VERSION NOMINAL SIZE**

NOMINAL SIZE : 2.5" (63mm) & 4" (100mm)

DIN CASE TYPE

AMERICAN CASE TYPE



NS	A	B	φC	D	E	Weight (lbs)
2.5"	0.39"	0.16"	2.36"	0.9"	1.36"	0.05
4"	0.39"	0.16"	3.74"	1.52"	2.24"	0.11

NS	A	B	φC	D	E	Weight (lbs)
2.5"	0.39"	0.16"	2.52"	0.9"	1.36"	0.05
4"	0.39"	0.16"	4.13"	1.52"	2.24"	0.11