

## SPECIAL FEATURES

Economical Version  
 General Purpose Applications  
 Standard Followed: ASME-B.40.1/EN837-1

## SPECIFICATIONS

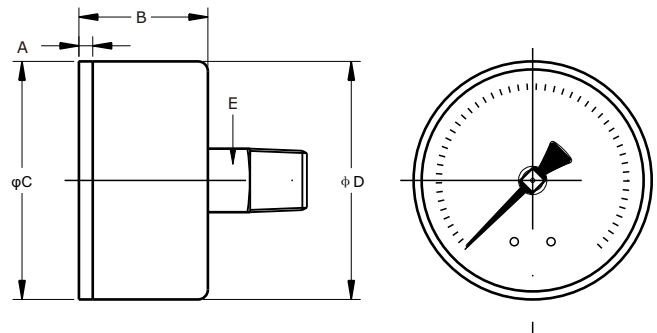
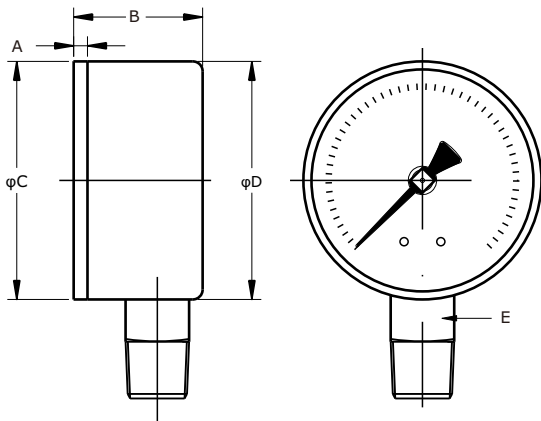
Ambient Temperature: -4°F(-20°C) to+150°F(+65°C)  
 Process Temperature: Max. 250°F(120°C)  
 Operating Pressure Range: 75% of scale Value  
 Over Pressure Limit: 120% of Max. scale Value  
 Case: ABS Plastic Case  
 Joints: Alloy Brazing/Soldering  
 Socket: Copper Alloy  
 Bourdon: Copper Alloy  
 Movement: Copper Alloy  
 Dial: Aluminum  
 Pointer: Fixed  
 Window: Snap-in Plastic Lens  
 Ranges: Vacuum to 1500psi



## ACCURACY AS PER ASME B.40.1

1.5"/2" : 3-2-3 (Grade B)  
 2.5"/3"/4" : 2-1-2 (Grade A)

\*Please consult factory for better accuracy availability.



| NS   | A     | B    | φC   | φD   | E     | Weight (lbs) |
|------|-------|------|------|------|-------|--------------|
| 1.5" | 0.1"  | 1.0" | 1.6" | 1.6" | 0.43" | 0.18         |
| 2"   | 0.1"  | 1.1" | 2.1" | 2.1" | 0.55" | 0.22         |
| 2.5" | 0.1"  | 1.1" | 2.4" | 2.4" | 0.55" | 0.29         |
| 4"   | 0.14" | 1.2" | 3.9" | 3.9" | 0.55" | 0.82         |

| NS   | A     | B    | φC   | φD   | E     | Weight (lbs) |
|------|-------|------|------|------|-------|--------------|
| 1.5" | 0.1"  | 1.0" | 1.6" | 1.6" | 0.43" | 0.18         |
| 2"   | 0.1"  | 1.1" | 2.1" | 2.1" | 0.55" | 0.22         |
| 2.5" | 0.1"  | 1.1" | 2.4" | 2.4" | 0.55" | 0.29         |
| 3"   | 0.14" | 1.2" | 3.9" | 3.9" | 0.55" | 0.82         |

## HOW TO ORDER

Example

### NOMINAL SIZE

| B    | C  | D    | E  | F  |
|------|----|------|----|----|
| 1.5" | 2" | 2.5" | 3" | 4" |

X

### TYPE OF MOUNTING

- 2 BOTTOM
- 4 CENTER BACK

X

### GAUGE CONNECTION

- 1BM** 1/8" BSP(M)
- 1NM** 1/8" NPT(M)
- 1TM** 1/8" BSPT(M)
- 2BM** 1/4" BSP(M)
- 2NM** 1/4" NPT(M)
- 2TM** 1/4" BSPT(M)
- 3BM** 3/8" BSP(M)
- 3NM** 3/8" NPT(M)
- 3TM** 3/8" BSPT(M)
- 4BM** 1/2" BSP(M)
- 4NM** 1/2" NPT(M)
- 4TM** 1/2" BSPT(M)
- 4MM** M20 X 1.5(M)

XXX

\*\*\*Please consult factory for any special connections

### RANGE

|             |        |           |           |           |            |            |            |            |      |      |     |
|-------------|--------|-----------|-----------|-----------|------------|------------|------------|------------|------|------|-----|
| CODE        | E1     | E2        | E3        | E4        | E5         | E6         | E7         | E8         | E9   | E10  | E11 |
| RANGE (psi) | -30"hg | -30"hg-15 | -30"hg-30 | -30"hg-60 | -30"hg-100 | -30"hg-160 | -30"hg-200 | -30"hg-300 | 15   | 30   | 60  |
| CODE        | E12    | E13       | E14       | E15       | E16        | E17        | E18        | E19        | E20  | E21  |     |
| RANGE (psi) | 100    | 160       | 200       | 300       | 400        | 500        | 600        | 800        | 1000 | 1500 |     |

E13

### OPTIONAL EXTRAS

- |  |  |
|--|--|
| <b>SG</b> OXYGEN SERVICE (FOR DRY VERSION)       | <b>RW</b> PLEXI GLASS  |
| <b>SF</b> MOVEMENT WITH DAMPENING JELLY          | <b>RZ</b> TOUGHENED GLASS  |
| <b>RH</b> CUSTOM DESIGNED DIAL                   | <b>SJ</b> MAXIMUM READING POINTER WITH PLEXI GLASS (FOR DRY VERSION)           |
| <b>ZB</b> RECEIVER RANGE                         | <b>FK</b> INTEGRAL DAMPENING SCREW (BRASS)                                     |
| <b>ZC</b> FREON RANGE (WITH TEMPERATURE SCALE)   | <b>GH</b> MATERIAL TEST CERTIFICATES   |
| <b>ZD</b> AMMONIA RANGE (WITH TEMPERATURE SCALE) | <b>PW</b> FIVE POINT CALIBRATION CERTIFICATE NATIONAL/ INTERNATIONAL STANDARDS |
| <b>SW</b> DIAL TAG MARKING                       |  |
| <b>SY</b> AISI 316SS TAG PLATE                   |  |

XX

**Ordering Example: P-02-X-X-XXX-(E13)-XX**