

SPECIAL FEATURES

- Standard Followed ASME-B 40.1 / EN837-3
- Compact Design
- External Zero Adjustable
- Ready For Oxygen Service
- IP 65

SPECIFICATIONS

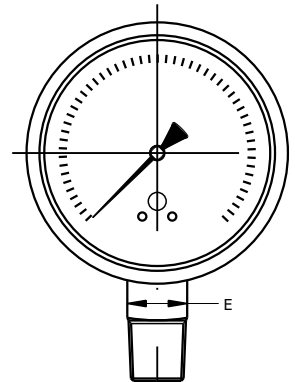
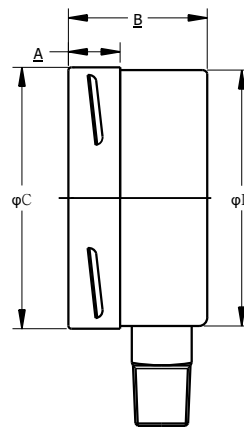
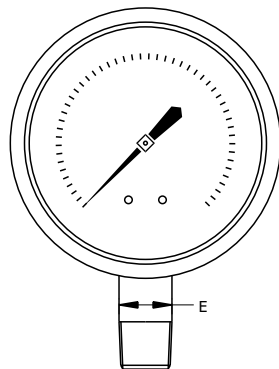
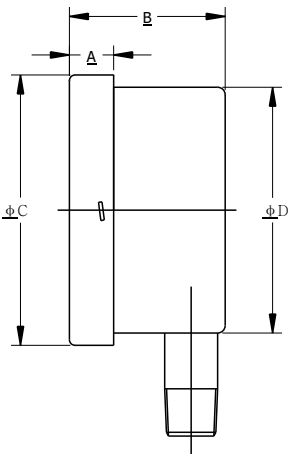
- Ambient Temperature: -4°F(-20°C) to + 150°F(+65°C)
- Process Temperature: Max.212°F (100°C)
- Operating Pressure Range: 75% of Scale Value
- Over Pressure Limit: Not Suitable
- Case: AISI 304 SS
- Joints: Alloy brazing/Soldering
- Socket: Copper Alloy
- Capsule: Copper Alloy
- Movement: Copper Alloy
- Dial: Aluminum
- Pointer: Fixed
- Window: Sheet Glass
- Range: -250"WC - 0 to 0-250"WC



ACCURACY AS PER ASME B.40.1

2.5"/4"/6" : 2-1-2 (GRADE A)

*Please consult factory for better accuracy availability.



NS	A	B	φC	φD	E	Weight (lbs)
2.5"	0.5"	1.6"	2.8"	2.6"	0.6"	0.26

NS	A	B	φC	φD	E	Weight (lbs)
4"	0.6"	1.9"	4"	3.9"	0.87"	1.50
6"	0.6"	1.9"	6.3"	6.2"	0.87"	2.65

HOW TO ORDER

Example

NOMINAL SIZE

D	F	H
2.5"	4"	6"

X

TYPE OF MOUNTING

- 1 WALL/SURFACE/PROJECTION MOUNTING WITH BOTTOM
- 2 BOTTOM
- 3 LOWER BACK
- 4 CENTER BACK
- 5 LOWER BACK WITH FRONT FLANGE
- 6 LOWER BACK WITH MOUNTING BRACKET
- 7 CENTER BACK WITH FRONT FLANGE
- 8 CENTER BACK WITH MOUNTING BRACKET

X

GAUGE CONNECTION

- 2BM** 1/4" BSP(M)
- 2NM** 1/4" NPT(M)
- 3BM** 3/8" BSP(M)
- 3NM** 3/8" NPT(M)
- 4BM** 1/2" BSP(M)
- 4NM** 1/2" NPT(M)
- 4MM** M20 X 1.5(M)

***Please consult factory for any special connections

XXX

RANGE

CODE	LPE1	LPE2	LPE3	LPE4	LPE5	LPE6	LPE7
RANGE ("WC)	-250-0	-160-0	-100-0	-60-0	-30-0	-15-0	-10-0
CODE	LPE8	LPE9	LPE10	LPE11	LPE12	LPE13	LPE14
RANGE ("WC)	-250-0	-160-0	-100-0	-60-0	-30-0	-15-0	-10-0

LPE9

OPTIONAL EXTRAS

- SG** OXYGEN SERVICE (FOR DRY VERSION)
- SF** MOVEMENT WITH DAMPENING JELLY
- RI** 25mm BOD
- SI** KNIFE EDGE POINTER
- FN** 2" PIPE/YOKE MOUNTING BRACKET & 'U' CLAMP (AISI 316 SS)
- RG** ANTI PARALLAX MIRROR BAND DIAL
- RH** CUSTOM DESIGNED DIAL
- AT** ATEX (AS PER 2014/34/EU)
- SW** DIAL TAG MARKING
- RW** PLEXI GLASS
- RX** SHATTERPROOF /SAFETY GLASS
- RZ** TOUGHENED GLASS
- ZM** ELECTRO POLISHED CASE & BEZEL
- CK** EPOXY PAINTED CASE & BEZEL
- OS** CASE WITH BAYONET TYPE BEZEL
- PS** AISI 316 SS CASE & BEZEL
- KA** ON-OFF TYPE VENT PLUG
- SX** SS TAG PLATE
- SY** AISI 316SS TAG PLATE
- FK** INTEGRAL DAMPENING SCREW (BRASS)

XX

Ordering Example: P-19-X-X-XXX-(LPE9)-XX