

## SPECIAL FEATURES

- Standard Followed ASME-B 40.1 / EN837-1
- Wetted Parts AISI 316L Stainless Steel
- Build in Stabilizer Movement
- Dry or Liquid Version
- NACE MR 0175 Compliance
- Helium Leak Tested
- 40mm Temperature Compensated Blow Out Disc
- Internal Vacuum/ Over Pressure Stops
- High Range from 15,000 psi
- IP 66



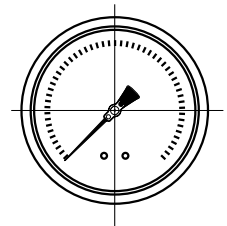
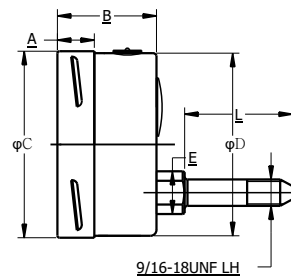
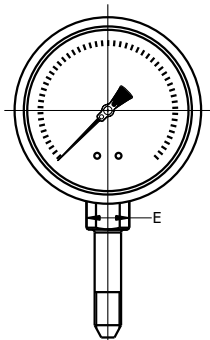
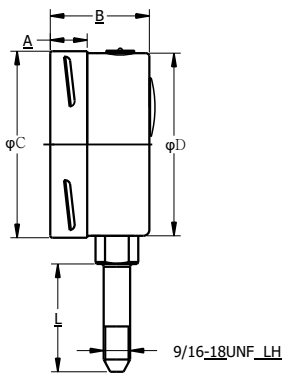
## SPECIFICATIONS

- Ambient Temperature: -4°F (-20°C) to + 150°F(+65°C)
- Process Temperature: Max.392°F (200°C)
- Operating Pressure Range: 75% of Scale Value
- Over Pressure Limit: 125% of Max.Scale Value
- Case: AISI 304 SS
- Joints: Tig Argon Arc Welding
- Socket: AISI 316L SS
- Bourdon: AISI 316L SS
- Movement: AISI 304 SS
- Dial:Aluminum
- Pointer: Micro Zero Adjustable
- Window: Safety Glass
- Range: 15,000 to 60,000 PSI

## ACCURACY AS PER ASME B.40.1

- 2.5"/3" : 2-1-2 (GRADE A)
- 4"/6"/8"/10" : 1-1-1 (GRADE 1A)

\*Please consult factory for better accuracy availability.



NS	A	B	φC	φD	E	L	Weight (lbs)
2.5"	0.5"	1.3"	2.5"	2.44"	0.55"	1.3"	0.44
3"	0.55"	1.56"	3.1"	3"	0.67"	2.5"	0.64
4"	0.67"	1.93"	3.95"	3.9"	0.87"	2.5"	1.37
6"	0.68"	1.97"	6.34"	6.2"	0.87"	2.5"	2.29
8"	0.68"	2"	7.87"	7.64"	0.87"	2.5"	4.01
10"	0.68"	2"	9.84"	9.74"	0.87"	2.5"	4.89

NS	A	B	φC	φD	E	L	Weight (lbs)
2.5"	0.5"	1.3"	2.5"	2.44"	0.55"	1.3"	0.44
3"	0.55"	1.56"	3.1"	3"	0.67"	2.5"	0.64
4"	0.67"	1.93"	3.95"	3.9"	0.87"	2.5"	1.37
6"	0.68"	1.97"	6.34"	6.2"	0.87"	2.5"	2.29
8"	0.68"	2"	7.87"	7.64"	0.87"	2.5"	4.01
10"	0.68"	2"	9.84"	9.74"	0.87"	2.5"	4.89

## HOW TO ORDER

### NOMINAL SIZE

D	E	F	H	I	J
2.5"	3"	4"	6"	8"	10"

Example

X

### TYPE OF MOUNTING

- 1 WALL/SURFACE/PROJECTION MOUNTING WITH BOTTOM
- 2 BOTTOM
- 3 LOWER BACK
- 5 LOWER BACK WITH FRONT FLANGE
- 6 LOWER BACK WITH MOUNTING BRACKET
- 7 CENTER BACK WITH FRONT FLANGE
- 8 CENTER BACK WITH MOUNTING BRACKET

X

### GAUGE CONNECTION

- 2BM** 1/4" BSP(M)
- 2NM** 1/4" NPT(M)
- 3BM** 3/8" BSP(M)
- 3NM** 3/8" NPT(M)
- 4BM** 1/2" BSP(M)
- 4NM** 1/2" NPT(M)
- 4MM** M20 X 1.5(M)
- 4UM** 9/16" UNF(M)
- 2HF** 1/4" HP(F)
- 2HM** 1/4" HP(F)

\*\*\*Please consult factory for any special connections

XXX

### RANGE

CODE	E29	E30	E31	E32	E33
RANGE (psi)	15000	20000	25000	30000	35000
CODE	E34	E35	E36	E37	
RANGE (psi)	40000	50000	55000	60000	

E13

### OPTIONAL EXTRAS

- |   |  |
|---|--|
| <ul style="list-style-type: none"> <li><b>SG</b> OXYGEN SERVICE (FOR DRY VERSION)</li> <li><b>OA</b> ACCURACY + 0.5% OF F.S.</li> <li><b>TI</b> MONEL BOURDON &amp; SOCKET (MONEL VERSION)</li> <li><b>TF</b> TESTED TO NACE STANDARD</li> <li><b>TB</b> HELIUM LEAK TEST</li> <li><b>SD</b> AISI 316 SS MOVEMENT</li> <li><b>SF</b> MOVEMENT WITH DAMPENING JELLY</li> <li><b>RI</b> 25mm BOD</li> <li><b>SI</b> KNIFE EDGE POINTER</li> <li><b>FN</b> 2" PIPE/YOKE MOUNTING BRACKET &amp; 'U' CLAMP (AISI 316 SS)</li> <li><b>RG</b> ANTI PARALLAX MIRROR BAND DIAL</li> <li><b>RH</b> CUSTOM DESIGNED DIAL</li> <li><b>ZB</b> RECEIVER RANGE</li> <li><b>AT</b> ATEX (AS PER 2014/34/EU)</li> <li><b>ZC</b> FREON RANGE (WITH TEMPERATURE SCALE)</li> <li><b>ZD</b> AMMONIA RANGE (WITH TEMPERATURE SCALE)</li> <li><b>SW</b> DIAL TAG MARKING</li> <li><b>RW</b> PLEXI GLASS</li> <li><b>RX</b> SHATTERPROOF /SAFETY GLASS</li> <li><b>RZ</b> TOUGHENED GLASS</li> <li><b>SJ</b> MAXIMUM READING POINTER WITH PLEXI GLASS FILLABLE VERSION</li> </ul> | <ul style="list-style-type: none"> <li><b>ZM</b> ELECTRO POLISHED CASE &amp; BEZEL</li> <li><b>CK</b> EPOXY PAINTED CASE &amp; BEZEL</li> <li><b>SQ</b> CASE WITH ROLLING TYPE BEZEL</li> <li><b>OS</b> CASE WITH BAYONET TYPE BEZEL</li> <li><b>PS</b> AISI 316 SS CASE &amp; BEZEL</li> <li><b>KA</b> ON-OFF TYPE VENT PLUG</li> <li><b>SX</b> SS TAG PLATE</li> <li><b>SY</b> AISI 316SS TAG PLATE</li> <li><b>SA</b> INTERNAL OVERPRESSURE STOP</li> <li><b>SB</b> INTERNAL VACUUM STOP</li> <li><b>ZL</b> OVER RANGE PROTECTION</li> <li><b>QB</b> INTEGRAL DAMPENING SCREW (AISI 316 SS)</li> <li><b>FL</b> INTEGRAL DAMPENING SCREW (MONEL)</li> <li><b>FS</b> FILLABLE LIQUID SILICON OIL</li> <li><b>FG</b> FILLABLE LIQUID GLYCERINE</li> <li><b>ZZ</b> DIELECTRIC OIL FILLED</li> <li><b>PX</b> DAMPENING LIQUID FLOUROLUBE FILLED</li> <li><b>PY</b> DAMPENING LIQUID GLYCERINE OIL FILLED</li> <li><b>PZ</b> DAMPENING LIQUID MINERAL LIQUID FILLED</li> <li><b>QA</b> DAMPENING LIQUID SILICON OIL FILLED</li> <li><b>GH</b> MATERIAL TEST CERTIFICATES</li> <li><b>PW</b> FIVE POINT CALIBRATION CERTIFICATE NATIONAL/ INTERNATIONAL STANDARDS</li> </ul> |
|---|--|

XX

**Ordering Example: P-34-X-X-XXX-(E13)-XX**